



## The Women's fleece jacket

Fitted

XS &gt; XXL

300 GSM

### Details

- Set in sleeves
- Elastic binding at neck edge, cuffs and hem
- Inside back neck grosgrain loop
- Nylon coil zipper with metal puller and cord ending
- Brushed fabric with Anti piling finish on inside and outside
- Front side welt pockets with zip opening
- Inside back neck tape in recycled polyester

### Composition

Shell - Polar Fleece  
 100% Polyester - Recycled - 300 GSM  
 Brushed

### Care

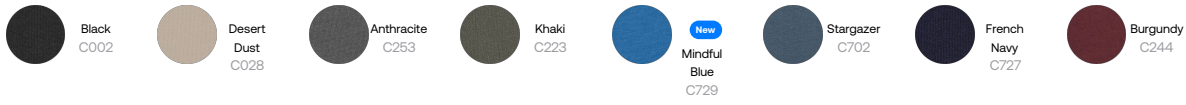
Wash similar colours together. No ironing. Close all snaps before washing. Line dry.



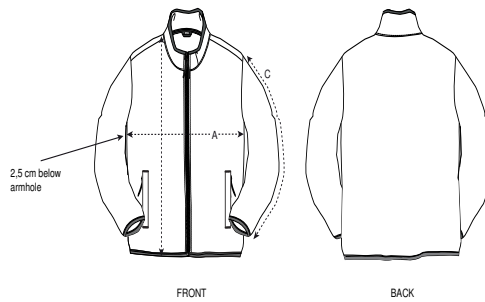
### Country of origin

Weaving : China  
 Dyeing : China  
 Assembly : Bangladesh

Colors



Size Guide



Sizes		XS	S	M	L	XL	XXL
A	Half Chest	47	50	53	56	60	64
B	Body Length	61	64	66	68	70	72
C	Sleeve Length	59.5	61	62.5	64	65.5	65.5

Packing

Sizes		XS	S	M	L	XL	XXL
	Pieces/bag	5	5	5	5	5	5
	Pieces/box	10	10	10	10	10	10